



# MONTHLY MEMBERSHIP PROGRESS REPORT

District 5M 10

Results as of: 6/30/2017

GMT: OPEN

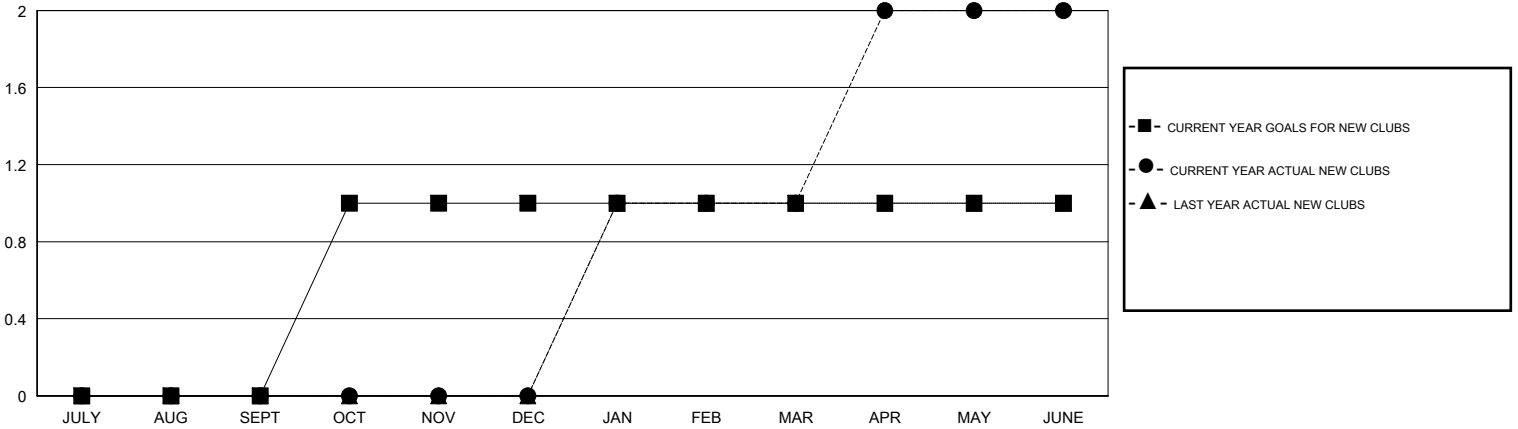
LOCATION MINNESOTA

GMT CA

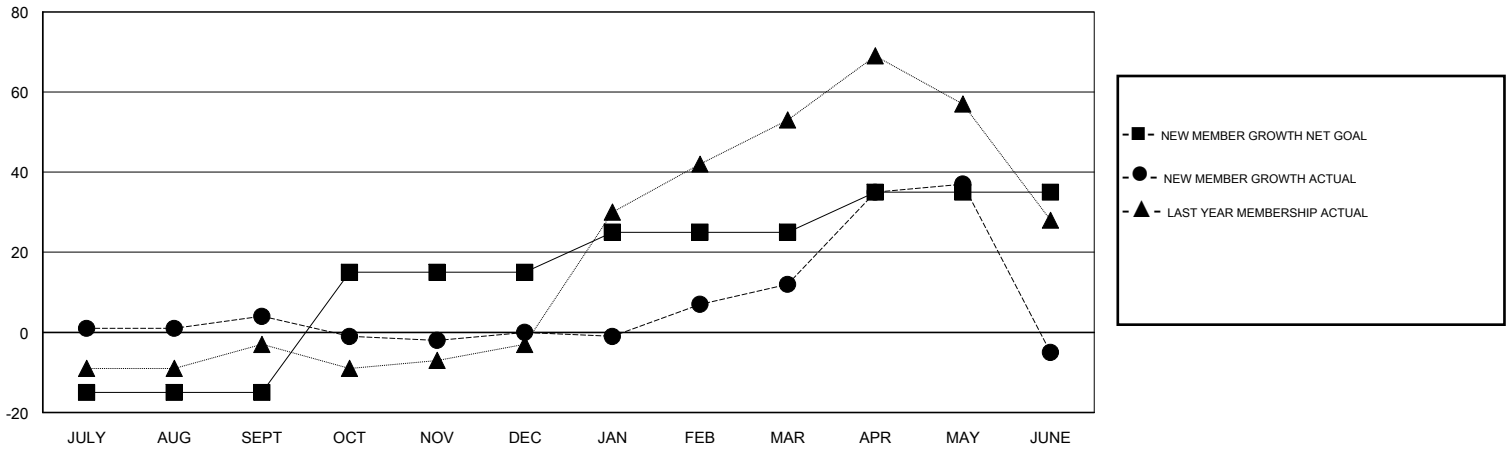
Clubs			
RESULTS FOR 2016-2017			
QUARTER	NEW CLUB GOAL	NEW CLUBS	DROPPED CLUBS
JULY/AUG/SEPT	0	0	0
OCT/NOV/DEC	1	0	0
JAN/FEB/MAR	0	1	0
APR/MAY/JUNE	0	1	1

Members			
RESULTS FOR 2016-2017			
QUARTER	NEW MEMBER GROWTH NET GOAL (not reinstated or transfers)	NEW MEMBER GROWTH ACTUAL (not reinstated or transfers)	DROPPED MEMBERS ACTUAL (including transfers)
JULY/AUG/SEPT	-15	20	16
OCT/NOV/DEC	30	26	30
JAN/FEB/MAR	10	56	44
APR/MAY/JUNE	10	63	80

GOALS AND ACTUAL NEW CLUBS CUMULATIVE



GOALS AND ACTUAL MEMBERS CUMULATIVE



DROPPED CLUBS: 1	33 CLUBS OF 45 ADDED 1 OR MORE NEW MEMBERS	<u>GENDER DISTRIBUTION</u>	
DROPPED MEMBERS		MALE	747 (59.29%)
DECEASED	18	FEMALE	513 (40.71%)
CLUB CANCELLED	0	TOTAL FAMILY UNIT MEMBERS	253
OTHER	152	FAMILY MEMBERS PAYING HALF DUES	129
TOTAL	170		

[CLICK HERE FOR CUMULATIVE MEMBERSHIP DATA](#)